

# FOOD RESOURCES



By:

Navkiran Kaur (2203863)

Harjot Kaur(2302718)

# **FOOD INSECURITY**

A top-down view of several hands of different skin tones reaching towards a central wooden cutting board. The hands are positioned around the board, with some fingers pointing towards the center. The background is a light-colored, textured surface, possibly concrete or stone. The overall image conveys a sense of unity and shared effort.

**Millions of people around the world lack access to sufficient, safe, and nutritious food due to poverty, inequality, conflict, and climate-related disasters.**

# MALNUTRITION



**Despite there being enough food produced globally, malnutrition persists in various forms, including undernutrition (resulting in stunting, wasting, and micronutrient deficiencies) and overnutrition (leading to obesity and diet-related diseases).**

# FOOD WASTE

A large pile of food waste, including vegetables, fruits, and other organic matter, is shown in a warehouse or industrial setting. A yellow tractor is visible in the background, and the scene is lit by overhead lights.

**Approximately one-third of all food produced for human consumption is lost or wasted each year, contributing to economic losses and environmental degradation.**

# LAND DEGRADATION

A wide-angle photograph of a dry, cracked field. The foreground and middle ground are dominated by a network of deep, dark cracks in the soil, forming a grid-like pattern. The soil is a mix of grey and brown tones. Sparse, dry, yellowish-brown grasses and small plants are scattered across the field. In the background, a line of green trees is visible under a clear sky.

**Soil erosion, deforestation, desertification, and urbanization degrade arable land, reducing its productivity and threatening future food production.**

An aerial photograph showing a vast agricultural landscape. In the foreground, there are rows of small, green, rounded trees, likely an orchard. Beyond this, there are large, flat fields, some of which appear to be vineyards with rows of grapevines. In the background, there are rolling hills and mountains under a clear blue sky. The overall scene depicts a well-managed agricultural area.

**CHANGES CAUSED BY  
AGRICULTURE AND  
OVER-GAZING**

# **ENVIRONMENTAL DEGRADATION**



# WATER SCARCITY AND POLLUTION





# CLIMATE CHANGE



# SOCIAL AND ECONOMIC IMPACTS



# **EFFECTS OF MODERN AGRICULTURE**



# **ENVIRONMENTAL IMPACT**

- **Deforestation**
- **Soil Degradation**
- **Water Pollution**
- **Loss of Biodiversity:**



# **SOCIAL IMPACT**

- **Labor Issues**
- **Health Concerns**



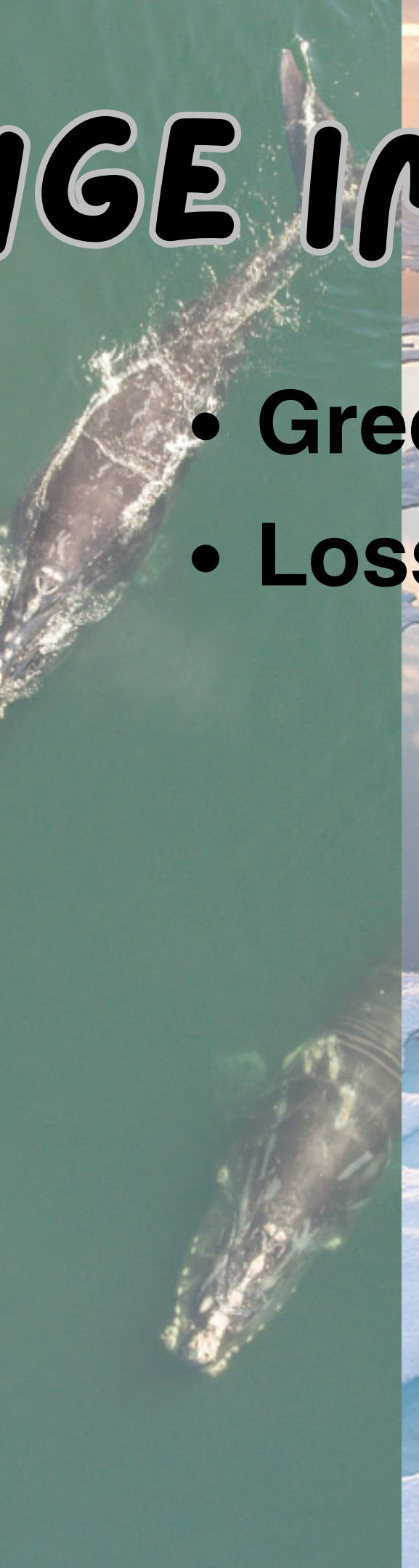
# **ECONOMIC IMPACT**

- **Consolidation of Land Ownership**
- **Market Dependency**
- **Trade Imbalances**



# CLIMATE CHANGE IMPACT:

- Greenhouse Gas Emission
- Loss of Carbon Sequestration



thank you